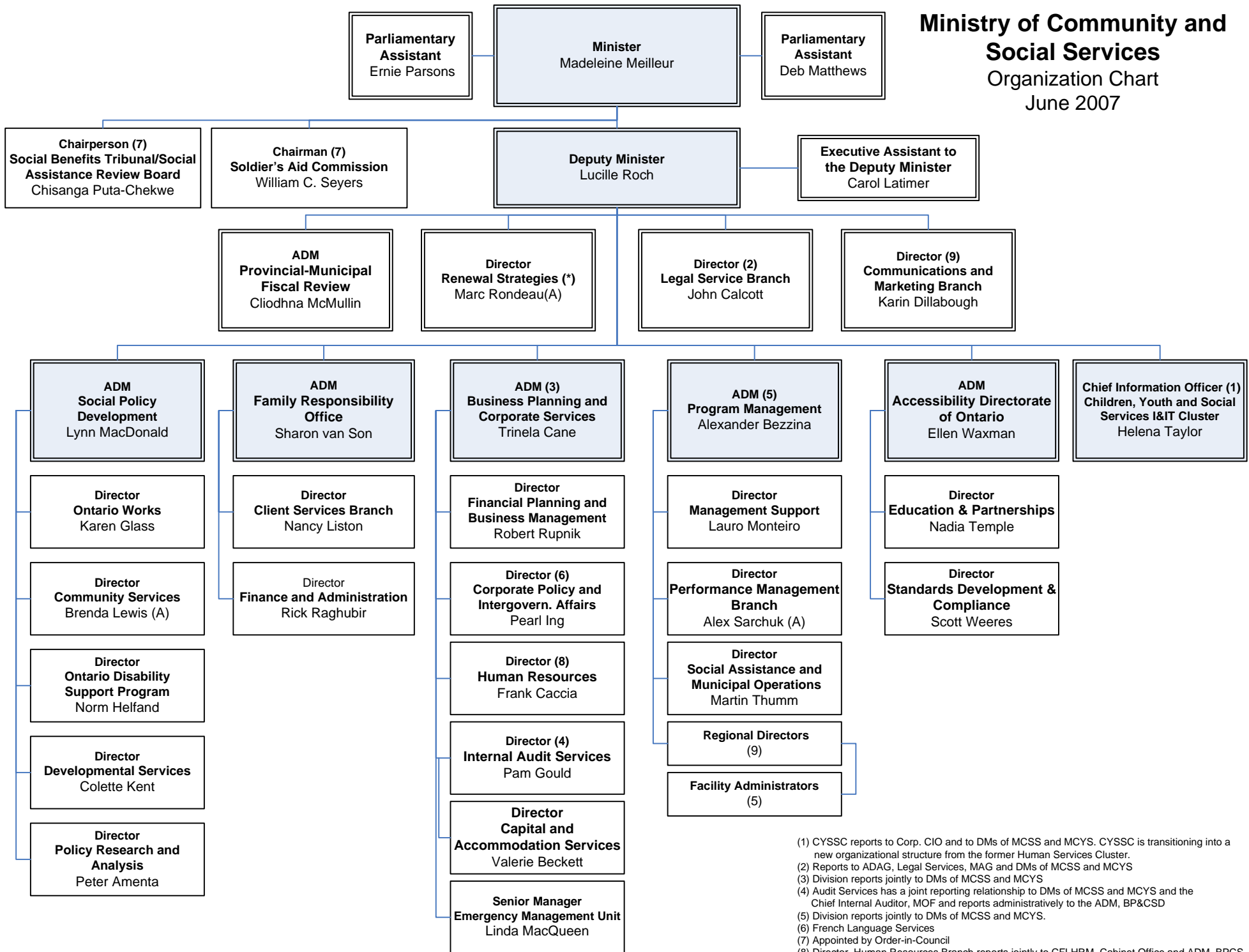


Ministry of Community and Social Services

Organization Chart

June 2007



- (1) CYSSC reports to Corp. CIO and to DMs of MCSS and MCYS. CYSSC is transitioning into a new organizational structure from the former Human Services Cluster.
- (2) Reports to ADAG, Legal Services, MAG and DMs of MCSS and MCYS
- (3) Division reports jointly to DMs of MCSS and MCYS
- (4) Audit Services has a joint reporting relationship to DMs of MCSS and MCYS and the Chief Internal Auditor, MOF and reports administratively to the ADM, BP&CSD
- (5) Division reports jointly to DMs of MCSS and MCYS.
- (6) French Language Services
- (7) Appointed by Order-in-Council
- (8) Director, Human Resources Branch reports jointly to CFLHRM, Cabinet Office and ADM, BPCS
- (9) Director, CMB dual reporting to DM and the DM Communications, Cabinet
- (*) Temporary Position